

**TOMORROW'S LEADING
TECHNOLOGY.
AVAILABLE TODAY.**

Z4.



4

Axes

1

Block

6

Tools

Wet

**Grind
+
Mill**

vhf
CREATING PERFECTION

PRECISE. FAST. INDEPENDENT. ECONOMICAL.



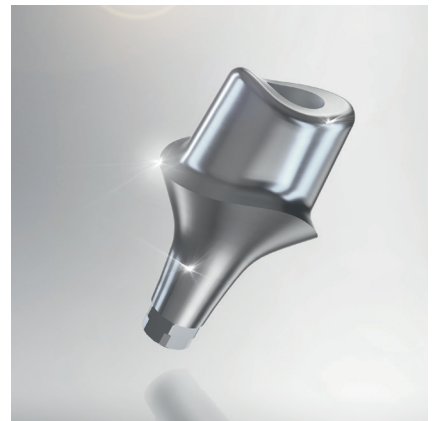
Highest precision

- Milling and grinding in ultra HD
- Heavy industrial quality
- 3 microns repetition accuracy



Fastest production

- Restorations in under 10 minutes
- 2-second block insertion
- 100,000 RPM electrical high frequency spindle



Extremely economical

- Clear water – no additives necessary
- Automatic changer for 6 tools
- Self-opening working chamber door and drawer
- Easy to learn, easy to operate
- 24 months warranty



Complete independence

- 30 block materials from 12 manufacturers – and growing
- >140 titanium and CoCr prefab abutments from 11 manufacturers
- Validated with all established scanners and design software
- Fully integrated workflow with TRIOS Design Studio (3Shape), DWOS chairside (Dental Wings) and exocad ChairsideCAD*
- Integrated PC with touch screen and Wi-Fi – no laptop or tablet necessary
- Built-in compressed air – no compressor needed

* Material and indication availability may vary by CAD provider. Full range of indications and materials available in STL workflow.

TOOLS AND SOFTWARE

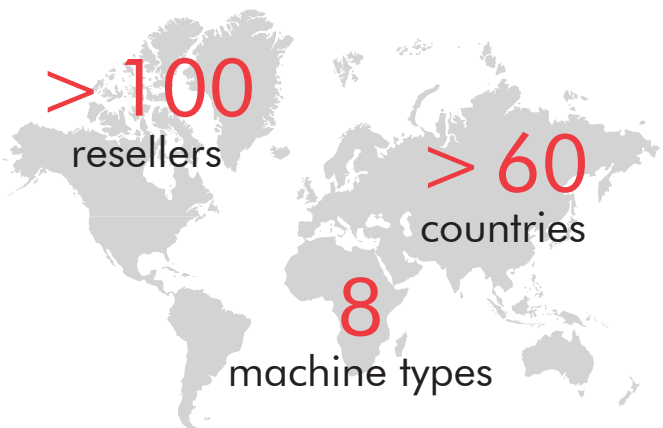
vhf precision tools

- Grinding and milling tools with sophisticated cutting geometries
- For machining all material classes: wax, PMMA, zirconia, composites, titanium, cobalt-chrome, and glass ceramics
- First-class service life, best quality and attractive prices

vhf DentalCAM

- High-performance software package with open STL import for all common CAD programs
- Optimized CAM strategies for the fastest possible machining
- Perfectly adapted for all vhf dental milling machines – for predictable first-rate results

PARTNERS WORLDWIDE



Dental milling machines, tools, and software from vhf are sold exclusively by official vhf resellers and OEM partners. Get in touch!

Global: dental.vhf.de/en
The Americas: vhf.com

■ Dental
■ from
■ Deutschland